

# AutoEnginuity ScanTool Installation



Page 1 of 2

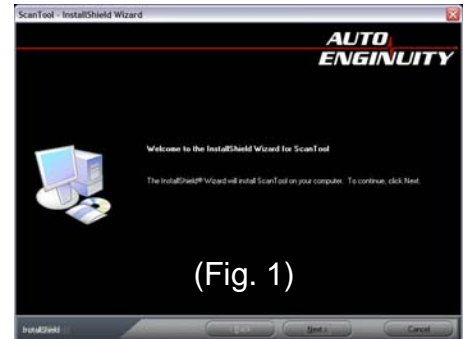
**IMPORTANT:** Before starting installation, please be sure that all items which were supplied with the kit are accounted for.



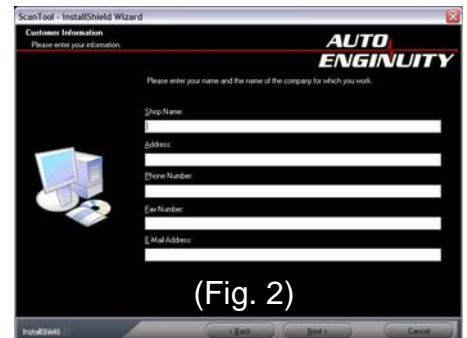
## The ScanTool Package Consists of:

- AutoEnginuity Software
- AutoEnginuity OBD-II Interface (ST06)
- USB 2.0 Interface and Cable
- User Guide
- Quick Installation Guide
- Enhanced Activation Instructions (Blue Paper)

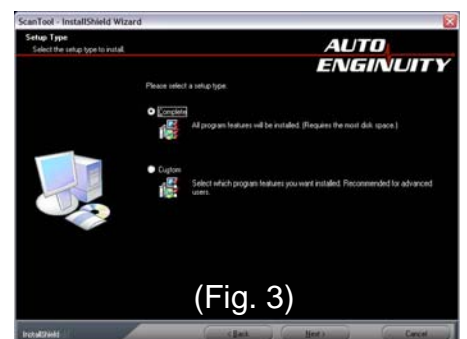
- 1) Insert the AutoEnginuity CD-Rom into your computers CD/DVD Drive.
- 2) The Set-up program will begin the installation process automatically. If it does not start automatically just navigate to the CD/DVD drive and double click on the Install/Setup.exe file.
- 3) Select Next, (Fig. 1) then accept the terms and conditions.
- 4) Enter your information or your shop information into the next screen. (This can be edited later also) (Fig. 2)
- 5) Select Complete for the installation. (Fig. 3)
- 6) Click Install.
- 7) Once complete, click Finish.



(Fig. 1)



(Fig. 2)



(Fig. 3)

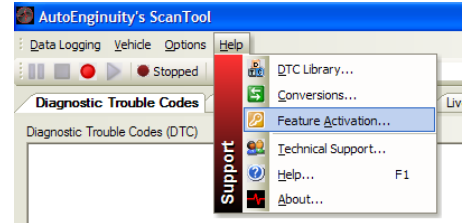
**Toll Free Sales & Customer Service: (866) 446-3360**

# AutoEnginuity ScanTool Installation

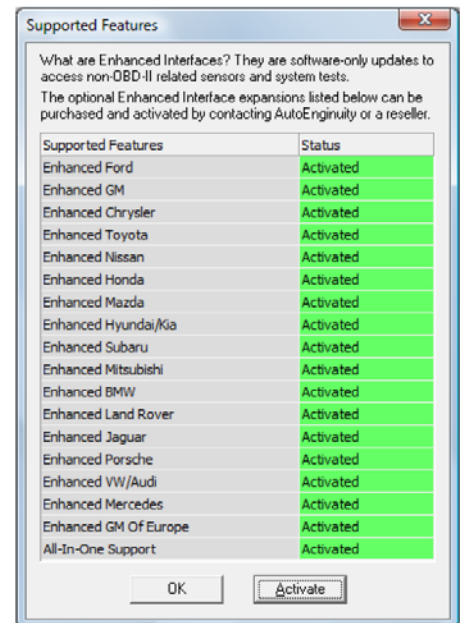


Page 2 of 2

- 8) Feature Activation (Ford Enhanced) can be done by selecting Help from the tool bar, then choose Feature Activation. (Fig.4)
- 9) The Supported Features screen will show which enhanced packages you have purchased previously. It will show "Activated or Not Activated" (Fig. 5)
- 10) Click on the Activate button to input your Activation Numbers from the Enhanced Activation Instruction Sheet (Blue Paper) (Fig. 6)
- 11) Now input the information from the Enhanced Activation Instruction Sheet (Blue Paper) (Fig. 7)
- 12) Input the Hardware ID Code (this is also located on the OBD-II Connector) (Fig. 7)
- 13) Input the Activation Number into the space provided (Fig. 7)
- 14) Click the OK Button at the top. (Fig. 7)
- 15) Once complete, restart AutoEnginuity Software. Do not restart your computer until you restart AutoEnginuity and ensure the activation code is stored.
- 16) Verify the Enhanced feature is turned on, by clicking Help in the toolbar, then Feature Activation. You should see the version you purchased shows "Activated".



(Fig. 4)



(Fig. 5)



(Fig. 6)



(Fig. 7)

Instructions provided by: Ken (Woodnthings on FTE)

#### Disclaimer of Warranties and Liabilities

Riffraff Diesel disclaims any responsibility/ liability for improper, incorrect, or inexperienced installation of products by the consumer or paid installer resulting in damage or loss. Buyer affirms by purchase of this product that it is fit for intended use and accepts all liability.

Buyer affirms products purchased are engineered to increase automotive performance and are used at buyers own risk and accepts full responsibility.

**Toll Free Sales & Customer Service: (866) 446-3360**