

HPOP Hose Replacement

Page 1 of 2



IMPORTANT: Before starting installation, please be sure that all items which were supplied with the kit are accounted for.

Parts:

[YC3Z-9J323-E](#): Drivers Side Head (All Years)

[YC3Z-9J323-DA](#): Passenger Side Head (99.5-03)

[F81Z-9J323-E](#): Passenger Side Head (Early 99)

Recommended Tools:

[Riffraff Diesel HPOP Line Disconnect Tool](#)

Instructions:

- 1) The HPOP hoses are fastened to the heads and the HPOP using special Eaton STC® quick disconnect fittings. These fittings allow the hoses to easily be removed using a special tool. The fittings and hoses are subject to pressures in excess of 3,000 psi. You must use the proper hoses and procedures to ensure system integrity.
- 2) The drivers side hose goes to the forward fitting on the HPOP and the passenger side hose goes to the aft fitting. (fuel bowl is removed in the pictures for clarity. It is not required to remove the fuel bowl to replace the hoses)
- 3) Clean the hose fittings thoroughly before disconnecting. This will reduce the likelihood that you will introduce contaminants into the high pressure oil system.
- 4) Insert the HPOP Line disconnect tool behind the release sleeve on the cylinder head fitting to disconnect the locking ring from the fitting. Pull the hose free from the fitting. (Fig 1 & 2) (Fig 4 & 5)
Insert the HPOP Line Disconnect tool behind the release sleeve on the HPOP fitting and pull the hose free from the fitting. (Fig 3)
- 5) Install the new hose onto the HPOP fitting after inspecting the fittings (see page 2). You will hear a slight click when the fitting engages the lock ring in the fitting. Test the connection by trying to pull the hose out of the fitting, it should not pull free of the fitting.
- 6) Install the other end of the hose into the cylinder head fitting. Test it for positive engagement by trying to pull the hose out of the fitting as you did on the HPOP end.
- 7) After installing the new lines the truck may start hard/slowly and run rough. This will get better after roughly 50 miles as there is air in the high pressure oil system. It will purge out while driving.
- 8) Let the engine idle for 5-10 minutes, check for leaks. After idling drive the truck and check for leaks.



Fig 1



Fig 2

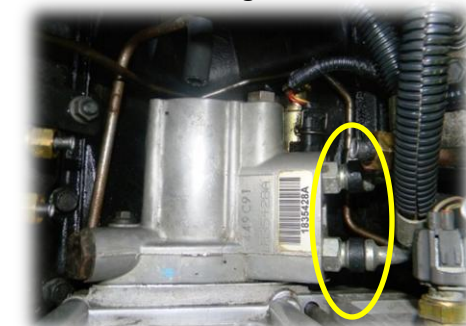


Fig 3

Toll Free Sales & Customer Service: (866) 446-3360

HPOP Hose Replacement

Page 2 of 2



Passenger Side Head Hose

Driver Side Head Hose



Fig 4



Fig 5



Fig 6

Eaton STC® Fitting Inspection:

Eaton STC® Fittings have an internal o-ring and back-up ring installed that should be inspected prior to installing your new hoses (Fig 6). The o-ring and back-up ring should be free of tears or gouges. The o-rings seal against the barrel of the hose (Fig 7). The latch ring should remain in the fitting on it's own. (Fig 6)



Fig 7



Special thanks to Ken (Woodnthings of FTE) for photos and instructions.

Disclaimer of Warranties and Liabilities

Riffraff Diesel disclaims any implied warranties of merchantability and fitness for a particular purpose.

Riffraff Diesel also disclaims any liability or consequential damages including, but not limited to, repair labor, rental vehicles, hotel cost, or any other inconvenience costs.

This warranty is in lieu of all other warranties or guarantees, either expressed or implied, and shall not extend to any consumer or to any person other than the original purchaser.

Toll Free Sales & Customer Service: (866) 446-3360